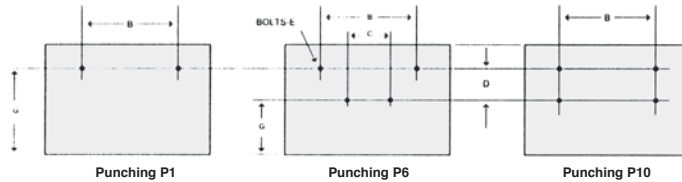


# BUCKET PUNCHING GUIDE FOR CHAINS

## Continuous Discharge Elevator Buckets on "K" Attachments

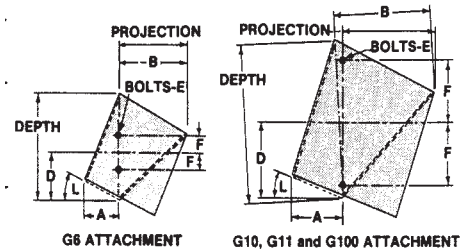


Chain Attachment Number	Bucket Size, Nominal								Punching	Inches				
	Types HF		Type HFO		Type MF		Type LF			B	C	D	E	G
	Min.	Max.	Min.	Max.	Min.	Max.	Min.	Max.						
C 102B-K2	8 X 5	10 X 5	8 X 5	10 X 5	8 X 5	10 X 5	----	----	P10	5-5/16	----	1-3/4	3/8	1-7/8
SS 102B-K2	8 X 5	10 X 5	8 X 5	10 X 5	8 X 5	10 X 5	----	----	P10	5-5/16	----	1-3/4	3/8	1-7/8
C 102B-1/2-K2	8 X 5	10 X 5	8 X 5	10 X 5	8 X 5	10 X 5	----	----	P10	5-5/16	----	1-3/4	1/2	1-7/8
SS 102B-1/2-K2	8 X 5	10 X 5	8 X 5	10 X 5	8 X 5	10 X 5	----	----	P10	5-5/16	----	1-3/4	1/2	1-7/8
C 110-K2	10 X 7	16 X 8	10 X 7	16 X 8	10 X 7	16 X 8	10 X 7	16 X 8	P10	5-5/16	----	1-3/4	3/8	3-3/8
SS 110-K2	10 X 7	16 X 8	10 X 7	16 X 8	10 X 7	16 X 8	10 X 7	16 X 8	P10	5-5/16	----	1-3/4	3/8	3-3/8
C 111-K2	10 X 6	12 X 6	10 X 6	12 X 6	10 X 6	12 X 6	10 X 6	12 X 6	P10	6-1/4	----	2-5/16	1/2	2-3/32
SS 111-K2	10 X 6	12 X 6	10 X 6	12 X 6	10 X 6	12 X 6	10 X 6	12 X 6	P10	6-1/4	----	2-5/16	1/2	2-3/32
C 132-K2	10 X 7	16 X 8	10 X 7	16 X 8	10 X 7	16 X 8	10 X 7	16 X 8	P10	7-1/2	----	2-3/4	1/2	2-7/8
SS 150PLUS-K2	10 X 7	16 X 8	10 X 7	16 X 8	10 X 7	16 X 8	10 X 7	16 X 8	P10	7-1/2	----	2-3/4	1/2	2-7/8
SS 856-K2	10 X 7	16 X 8	10 X 7	16 X 8	10 X 7	16 X 8	10 X 7	16 X 8	P10	6-5/16	----	2-1/4	3/8	3-1/8

## Continuous Discharge Elevator Buckets on "G" Attachments

### STYLE SUPER CAPACITY (SC)

Chain Attachment Number	Bucket Size, Inches		Inches					L°
	Proj.	Depth	A	B	D	E	F	
SS 4850-G6	8-3/4	11-5/8	4-9/16	8-3/4	5-1/4	3/4	1-7/8	28° 30'
SS 4851-G10	12	17-3/8	6-1/2	12-7/16	7-1/8	1/2	4-1/2	22°
SS 4852-G10	12	17-3/8	6-1/2	12-7/16	7-1/8	1/2	4-1/2	22°
SS 4851-G11	12	17-3/8	6-1/2	12-7/16	8-1/2	5/8	4-1/2	22°
SS 4852-G11	12	17-3/8	6-1/2	12-7/16	8-1/2	5/8	4-1/2	22°
SS 4851-G100	12	17-3/8	6-1/2	12-7/16	8-1/2	5/8	7	22°
SS 4852-G100	12	17-3/8	6-1/2	12-7/16	8-1/2	5/8	7	22°

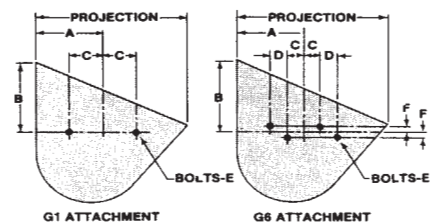


For installations have dimensions certified by Tapco.

## Centrifugal Discharge Elevator Buckets on "G" Attachments

### STYLE AA

Bucket Projection (Nominal) Inches	Bucket Size, Inches		Chain Attachment Number	Min. Projection Inches	Inches			
	A	B			C	D	E	F
4	1-5/8	2-1/8	45-G1	4	11/32	----	3/16	----
5	2	2-5/8	52-G1	4	17/32	----	3/16	----
6	2-5/8	3-1/8	62-G1	5	1	----	1/4	----
7	2-1/2	3-3/4	77-G6	6	5/8	9/16	1/4	1/4
8	2-5/8	4-7/8	H78-G1	6	1-5/16	----	1/4	----
			88-G6	6	7/8	21/32	1/4	9/32
			C102B-G6	10	1-1/16	11/16	3/8	7/16
			C110-G6	10	1-1/16	11/16	3/8	7/16
10	3-3/4	5-3/8	C111-G6	10	1-1/16	11/16	3/8	15/32
			C111SP-G6	10	1-1/16	11/16	3/8	15/32
			C131-G6	6	27/32	11/16	3/8	9/32
			C188-G6	6	27/32	11/16	1/4	9/32
			462-G1	5	1	----	1/4	----
477-G1	6	1-5/16	----	5/16	----			
488-G6	6	27/32	11/16	1/4	9/32			
730-G6	10	1-3/4	----	3/8	5/8			
825-G6	10	1-3/4	----	3/8	5/8			
830-G6	10	1-3/4	----	3/8	5/8			
4103-G6	6	27/32	11/16	3/8	9/32			



For installations have dimensions certified by Tapco.